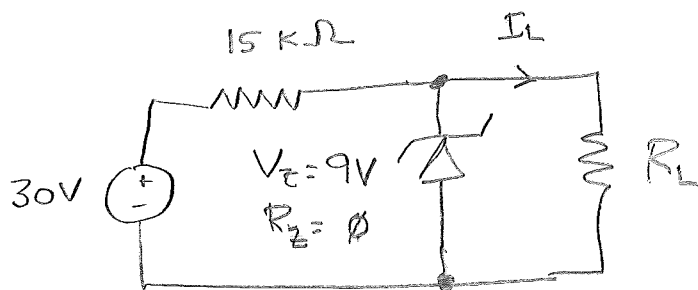


①



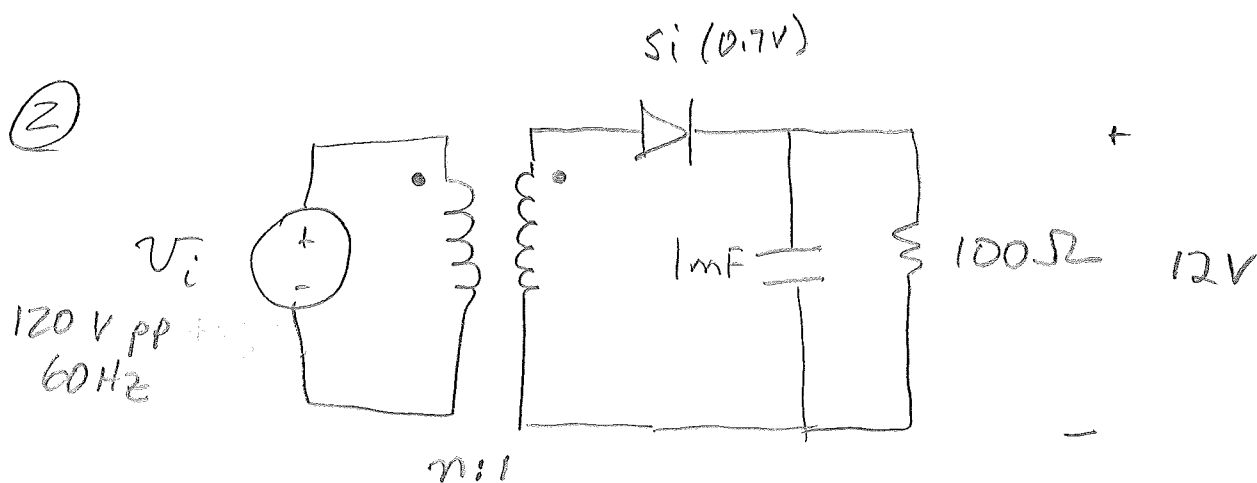
Find

A) maximum load current, I_L , that can be drawn and still maintain Regulation

B) Minimum value of R_L for regulated voltage

C) Power Dissipation in Zener for Case A + Case B above.

②



Find turns ratio + ripple voltage,
what happens when load goes to 10Ω

③ Do problem 2 for full-wave rectifier.

④ Simulate problem 2 + problem 3 in PSpice or equivalent. Produce plots of V_{in} , V_{out} and confirm ripple voltage calculations